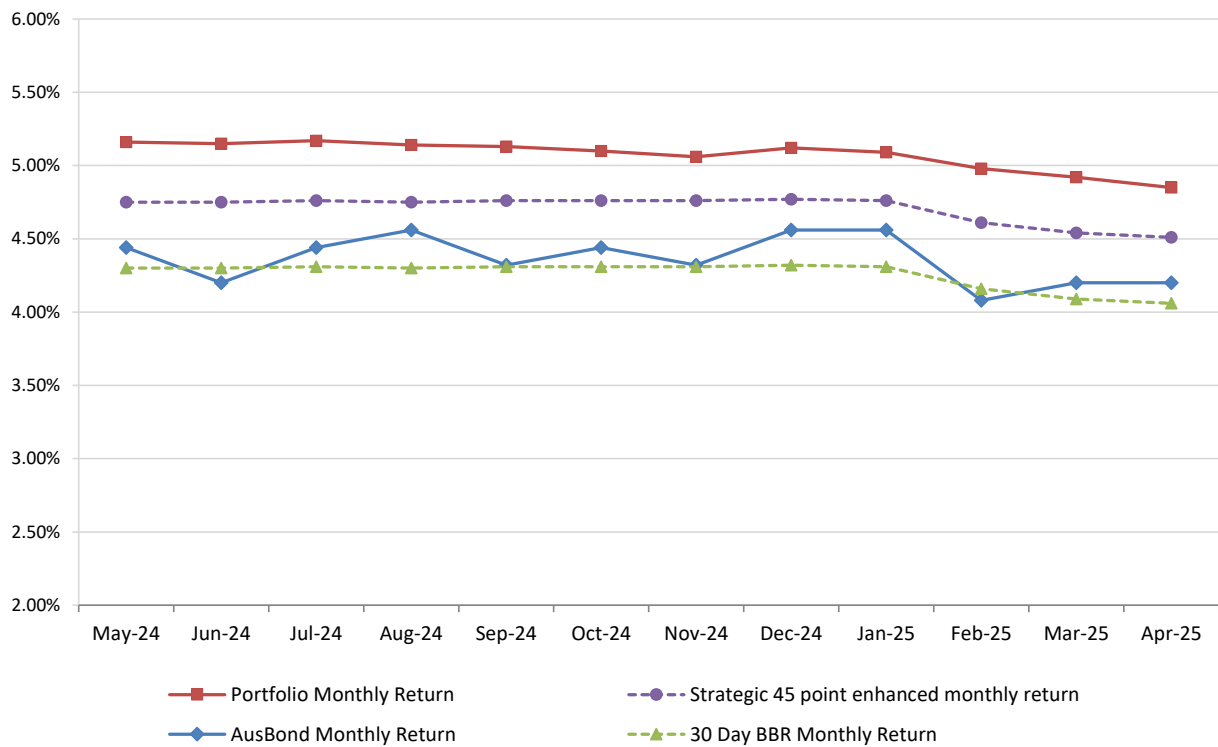


# **Attachment B**

**Investment Performance  
as at 30 April 2025**

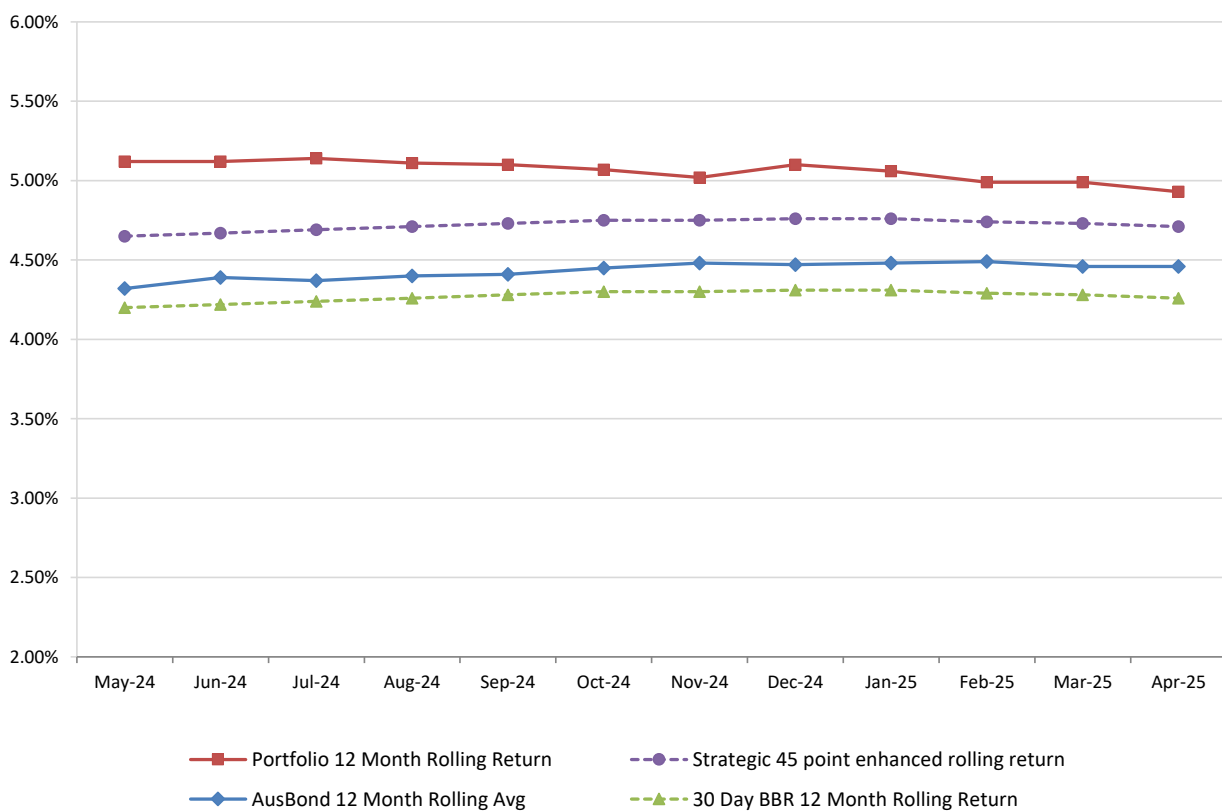
## Monthly Results

### Actual Portfolio vs Strategic Enhanced Benchmark vs AusBond Benchmark vs 30 Day BBR Benchmark April 2025

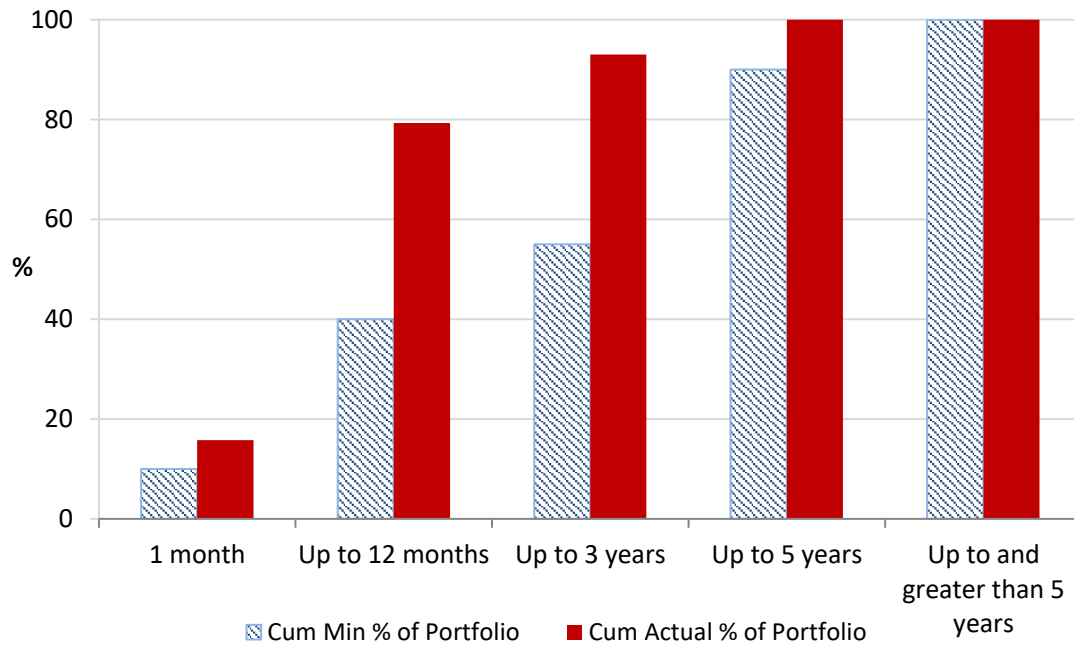


## 12 Month Rolling Averages

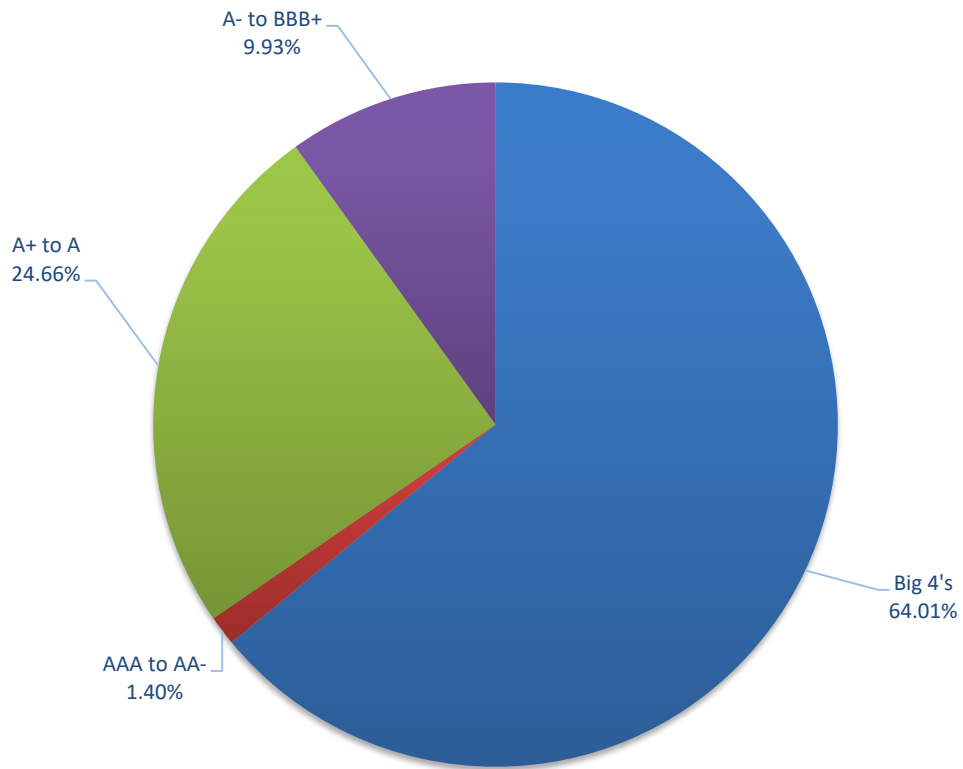
### Actual Portfolio vs Strategic Enhanced Benchmark vs AusBond Benchmark vs 30 Day BBR Benchmark April 2025



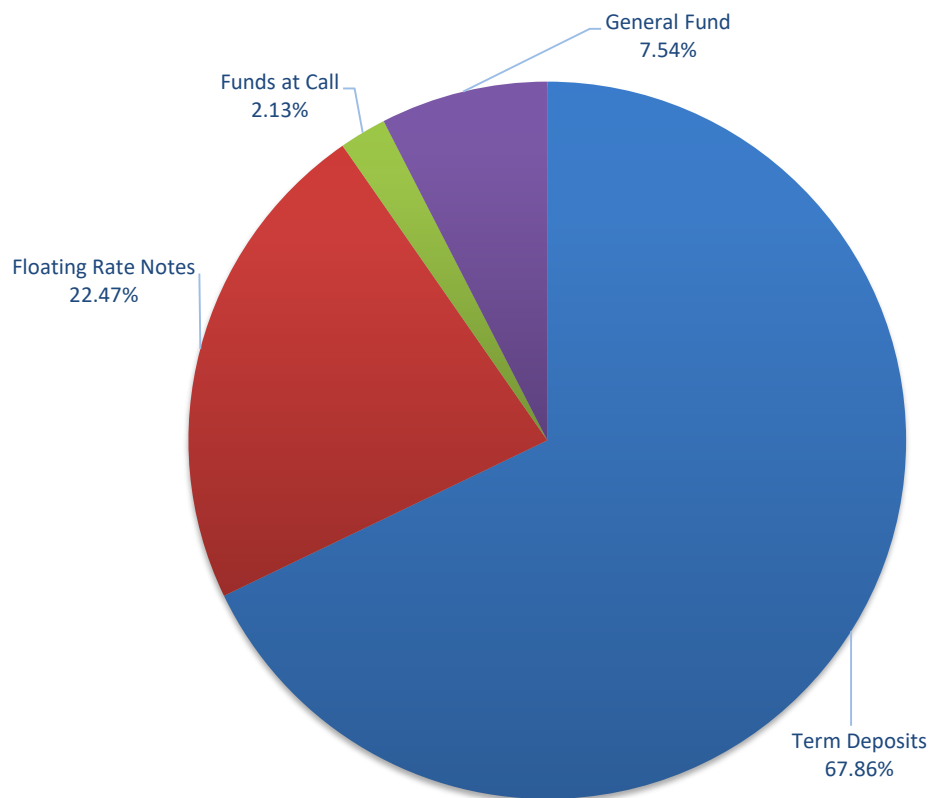
**Portfolio Liquidity - Minimum Allocations as at 30 April 2025**



### Risk Profile as at 30 April 2025



### Risk Profile as at 30 April 2025



INVESTMENT AND CASH DISTRIBUTION BY FINANCIAL INSTITUTION				
as at 30 April 2025				
Institution Category	Financial Institution	Amount \$M	Financial Inst. %	Institution Cat. %
Australian Big 4 Bank (and related institutions)	ANZ Bank	23.0	3.1	
	Commonwealth Bank	23.9	3.2	
	National Australia Bank	176.5	24.0	
	Westpac Banking Corporation	222.3	30.2	
<b>Big 4 Total</b>		<b>445.7</b>		<b>60.61</b>
Other Australian ADIs and Australian subsidiaries of foreign institutions	Bank Australia Limited	9.5	1.3	
	Bank of Queensland	58.0	7.9	
	Bendigo & Adelaide Bank	13.0	1.8	
	Great Southern Bank (formerly Credit Union Australia)	8.9	1.2	
	ING Bank	80.0	10.9	
	Suncorp Bank	90.0	12.2	
	Macquarie Bank Ltd	9.0	1.2	
	Northern Territory Treasury Corporation	10.0	1.4	
	Newcastle Greater Mutual Group Ltd	11.3	1.5	
<b>Other ADI Total</b>		<b>289.7</b>		<b>39.39</b>
<b>Grand Total</b>		<b>735.3</b>	<b>100.0</b>	<b>100.000</b>